

Jan. 29, 2019

To: Gordon Burkette
Director, Keep DeKalb Beautiful

From: Jan Costello
President, Greater Hidden Hills Community Dev. Corp.

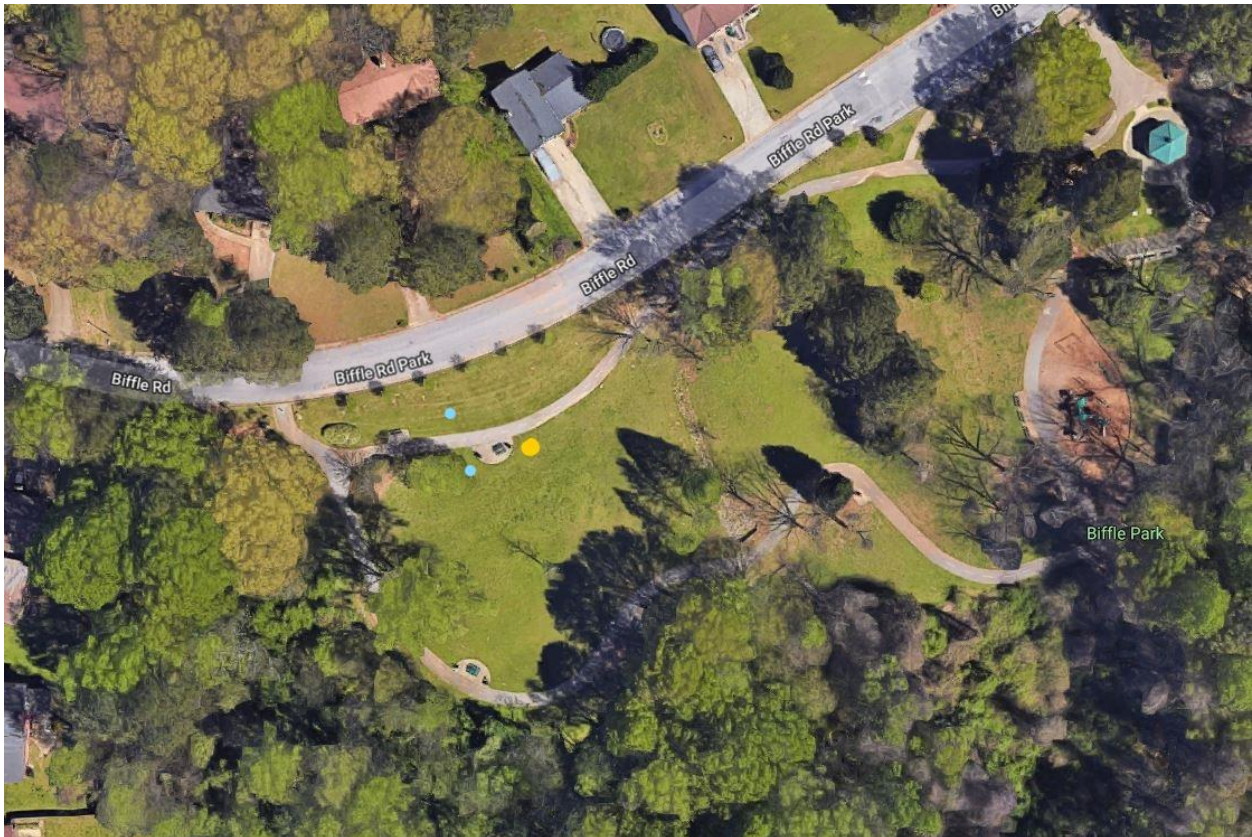
On behalf of the Greater Hidden Hills Community Development Corporation, Hidden Hills Civic Association, Friends of Biffle Park, and Friends of Hairston Park, I am making a Tree Bank request.

This file contains location pictures and the tree specimen. All trees are recommended by UGA, Trees Atlanta, and Clemson University. A tree chart with descriptions is included.

Biffle Park

1 Panache Shumard Oak (yellow dot); 5 caliper

2 Hybrid Dogwood – Celestial (blue dots); 4 caliper



Hairston Park

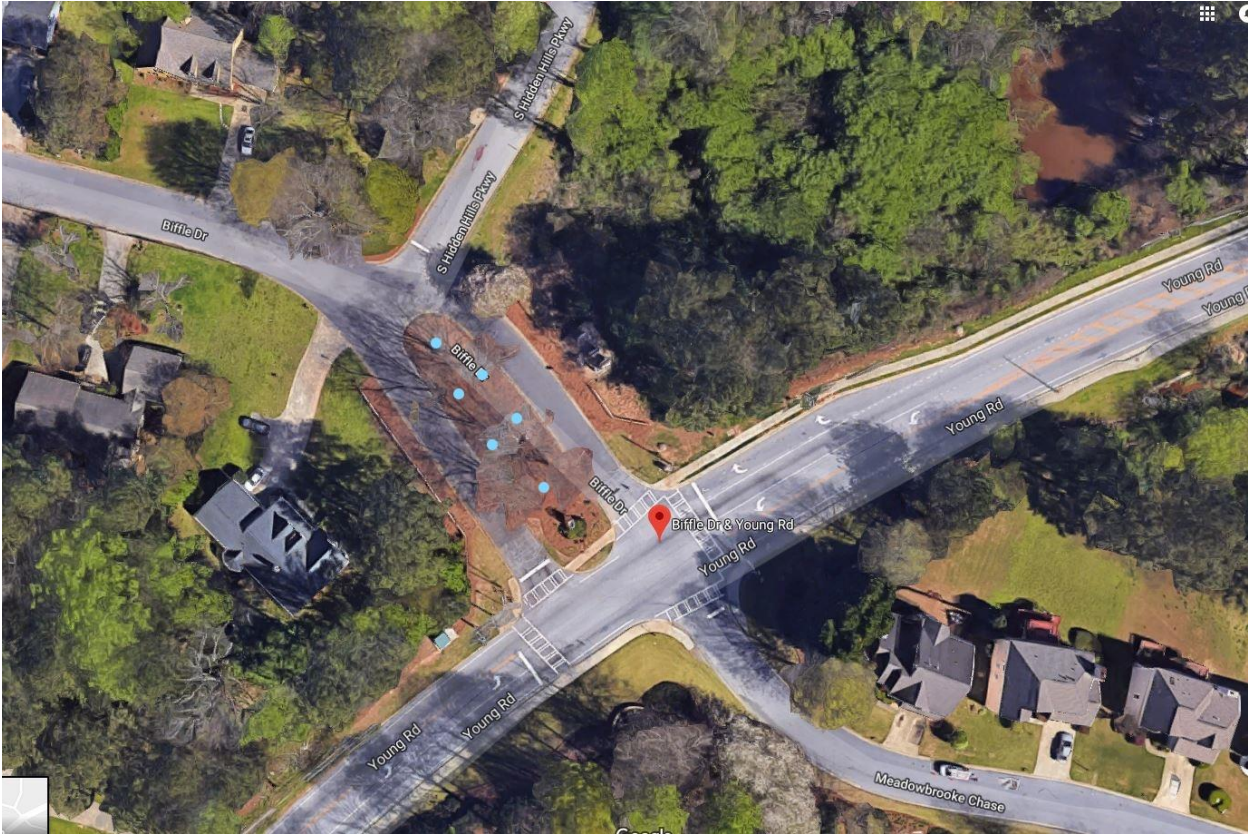
1 Nellie Stevens Holly, 5 caliper

To replace the one taken out by the County.



Biffle Road and Young, entrance island

6 Bowhill maple, (blue dots), 5 caliper



Biffle Island at Greenwyck

1 Hybrid Dogwood Celestial, (yellow dot), 4 caliper

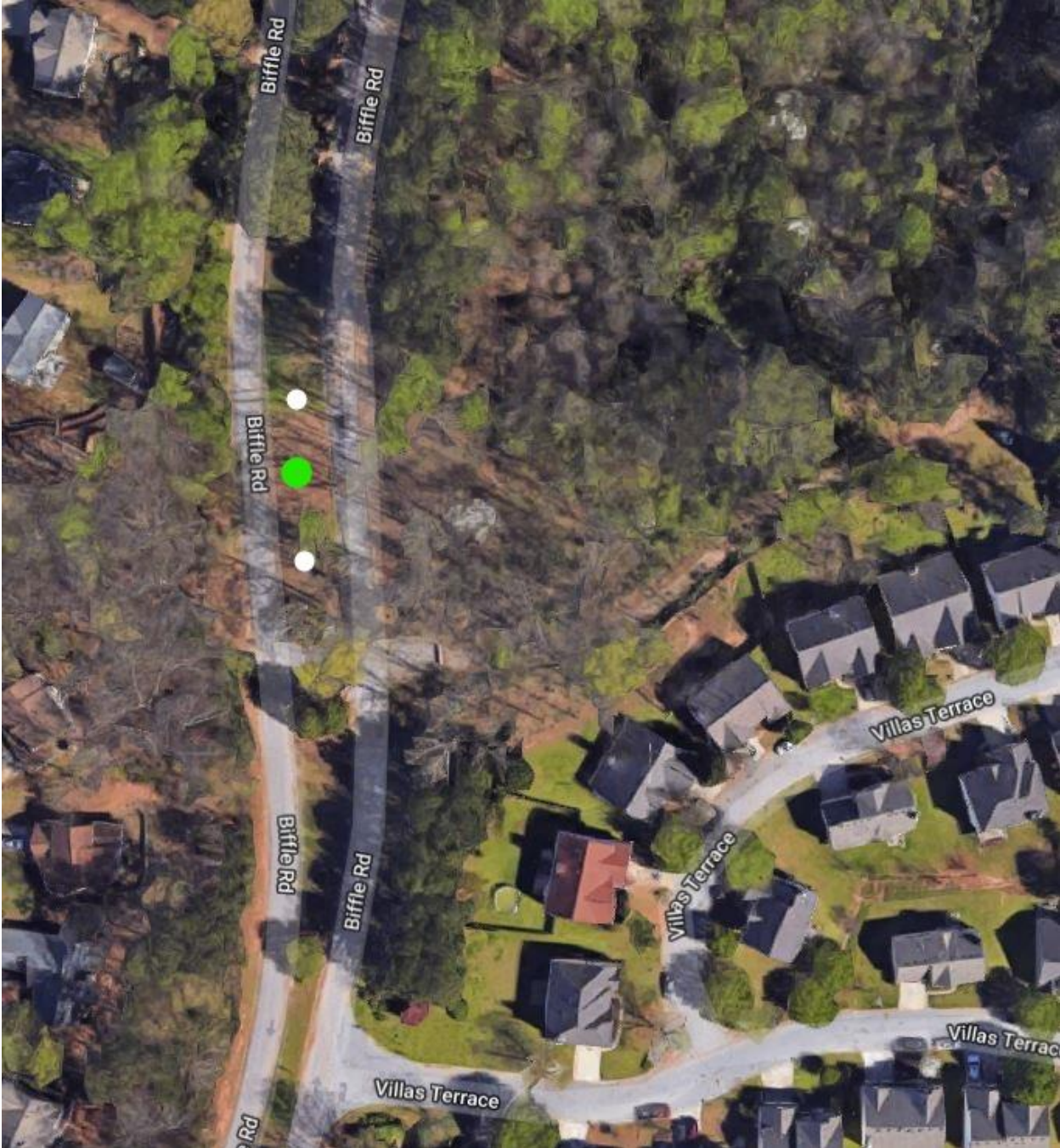
2 Old Glory Maple, (red dots), 5 caliper



Biffle Island near Villas

1 GA Green Gem Ash, (green dot), 5 caliper

2 Hybrid Dogwood Celestial, (white dots), 4 caliper



Woodway Island near Wedgewood

1 Freedom Apple & 1 Liberty Apple (red dots), 4 caliper

1 Orient Pear, 1 Waite Pear, and 1 Corrick pear (yellow dots), 4 caliper



Woodway at Quailwood

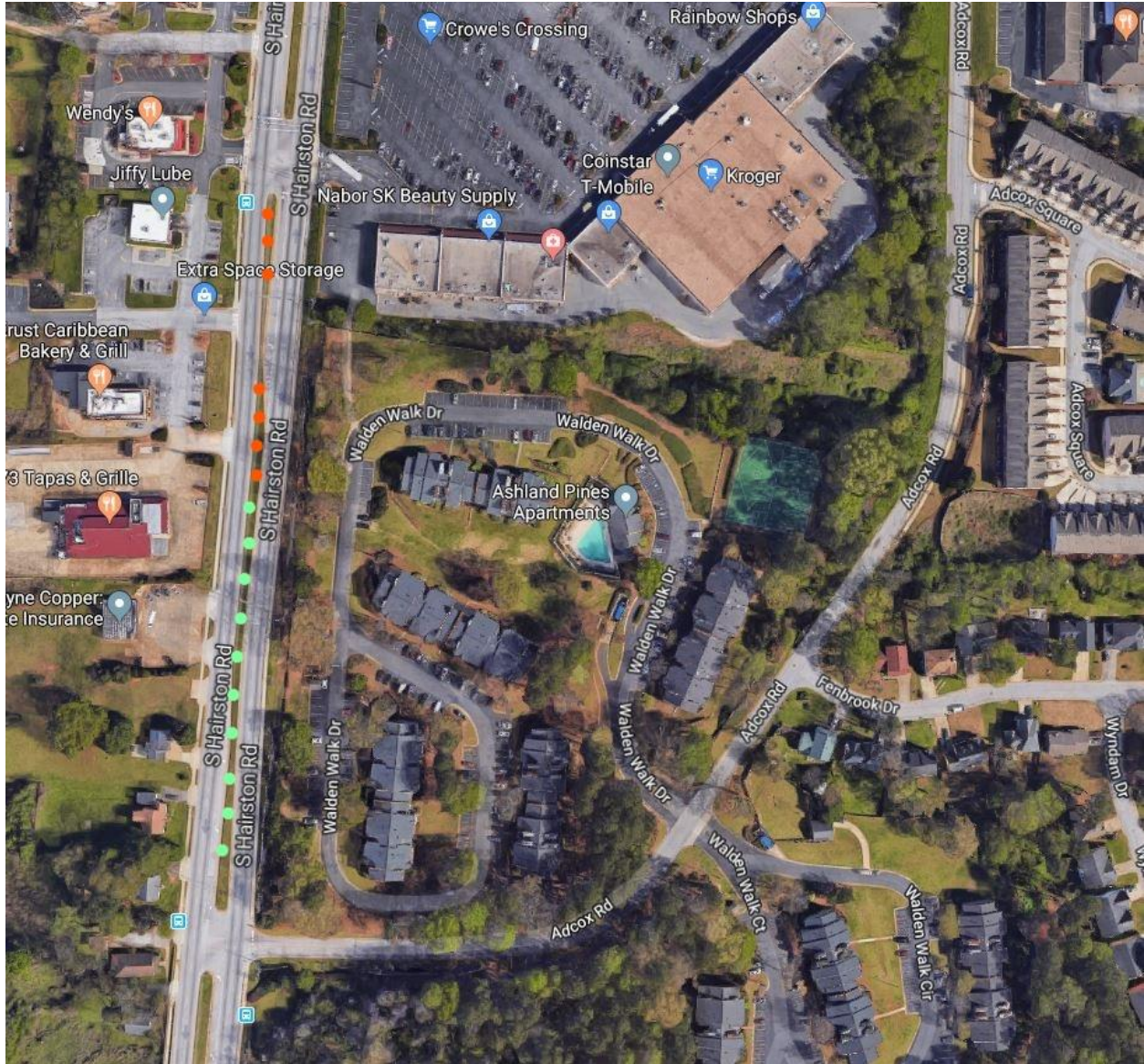
5 Tulip Poplar, (yellow dots), 5 caliper



Continuation of S. Hairston median improvement, near Redan

7 Crepe Myrtle Dynamite, (red dots), 4 caliper

10 American Hophornbeam, (green dots), 5 caliper



Tree Specimen	# Requested	Height & Width	Description
American Hophornbeam	10, (5 caliper)	25'-30' high 17'-20' wide	Heat & drought tolerant Full sun or partial shade Slow grower
Apple – Freedom and Liberty	2 (1 each), (4 caliper)	25' high space 18' feet	Disease resistant; plant together
Crepe Myrtle Dynamite	7, (4 caliper)	20'-25' high 10'-20' wide	Flowers last 4 months; hardy;
GA Green Gem Ash	1, (5 caliper)	50' high 35' wide	Tough street tree
Hybrid Dogwood – Celestial	4, (4 caliper)	12'-20' high 10'-20' wide	Good for birds. Spring flowers. Tolerant urban street tree.
Maple – Old Glory	2, (5 caliper)	40' – 50' high 35' wide	Heat tolerant, fall color
Maple – Bowhall	6, (5 caliper)	40' high 15' wide	Heat tolerant, cylindrical, fall color
Nellie Stevens Holly	1, (5 caliper)	15'-25' high 10'-20' wide	Fast growing, hardy, evergreen
Panache Shumard Oak	1, (5 caliper)	85' high 50' wide	Ideal for urban sites
Pear – Orient, Waite, Connick	3 (1 each), (4 caliper)	25' high space 20' feet	Blight resistant, plant together
Tulip Poplar	5, (5 caliper)	70' – 90' high 40'-50' wide	Pyramidal Tulip-shaped, light greenish-yellow flowers